



SOLUZIONI ELETTRICHE INDUSTRIALI

SOLUTIONS ELECTRIQUES INDUSTRIELLES  
INDUSTRIAL ELECTRICAL SOLUTION

**SHELTER PREFABBRICATI EQUIPAGGIATI**  
***SHELTER PREFABRIQUE ET EQUIPEE***  
***PREFABRICATED AND EQUIPPED SHELTER***

**Competence  
& Experience**

## SOLUZIONI ELETTRICHE INDUSTRIALI

La **SELI Srl** è una giovane e moderna società di engineering che si propone sul mercato della trasmissione di potenza elettrica con un proprio know-how per fornire alle varie esigenze industriali delle soluzioni efficaci e tecnologicamente avanzate. La nostra missione aziendale è soddisfare il cliente con competenza e professionalità. Grazie a consolidate partnership internazionali con i principali produttori **SELI Srl** è in grado di fornire una gamma completa di Trasformatori Elettrici, Quadri Normalizzati di Bassa e Media Tensione, Macchine Elettriche Rotanti ed Azionamenti Elettrici Industriali.

La **SELI Srl** dispone di un'ampia gamma di prodotti :

- Trasformatori di Bassa, Media ed Alta Tensione
- Quadri di Bassa e Media Tensione sia con Cassetti Fissi che Estraibili
- Motori DC Standard e Speciale Bassa Tensione
- Motori AC Standard e Speciale Bassa Tensione
- Motori AC Standard e Speciale Media Tensione
- Componenti Elettrici ed Elettronici
- Shelter Prefabbricati Equipaggiati per Installazione Outdoor
- Gruppi Elettrogeni con Alimentazione Diesel o Gas
- Componentistica di Ricambio

Tutti i nostri partner industriali sono delle primarie società qualitativamente riconosciute a livello nazionale ed internazionale, operanti secondo le normative qualità UNI EN ISO 9001:2008

**SELI Srl** est une société jeune et moderne d'ingénierie spécialisée dans le domaine de la transmission de puissance électrique. Par son savoir-faire elle saura répondre à vos exigences industrielles en vous proposant les solutions les plus efficaces avec les technologies les plus avancées. Sa mission est de satisfaire le client avec compétence et professionnalisme. Grâce à un partenariat avec des constructeurs internationaux **SELI Srl** est en mesure de vous fournir une gamme complète de Transformateurs Electriques, des Cellules Moyenne Tension, de Tableaux Basse Tension Normalisés, de Machines Electriques Tournantes.

**SELI Srl** vous propose un éventail complet de produits :

- Transformateurs de Basse, Moyenne et Haute Tension
- Tableaux Normalisés de Basse et Moyenne Tension
- Moteurs Courant Continu
- Moteurs Asynchrone Standards ou Spéciaux en Basse et Moyenne Tension
- Composants Electriques et Electroniques
- Shelter (abri) Préfabriqués Entièrement Equipés pour Installations Extérieures
- Groupes Electrogènes Diesel ou Gaz
- Pièces de Rechange

Tous nos partenaires industriels sont des fabricants reconnus tant au niveau national qu'international opérant selon la norme qualité UNI EN ISO 9001:2008

**SELI Srl** is a young and modern Engineering company proposing itself on the electric power transmission market with a proper know-how to provide advanced solutions for various industrial application. Our mission is simply satisfy the customer with competence and professionalism. Thanks to our consolidate international partnership with the principals manufacturing on the market, **SELI Srl** is able to provide a complete range of Electric Transformers, Normalized Medium and Low voltage Switchgears, Electrical Rotary Machine, Industrial Drives..

**SELI Srl** has a wide range of products :

- Transformers Low, Medium and High Voltage
- Standardized Low and Medium Voltage Switchgears Panels
- Low Voltage DC Motors Standard and Special
- Low Voltage AC Motors Standard and Special
- Medium Voltage AC Motors Standard and Special
- Electrical and Electronic Components
- Prefabricated and Equipped Shelter for Outdoor installation
- Oil and Gas Gen Set
- Spare Parts

All of our industrial partners are primary company with a national and international recognized quality level, working according to the standards UNI EN ISO 9001:2008

## SOLUZIONI ELETTRICHE INDUSTRIALI

### ■ COS'E' UNO SHELTER

*Uno shelter è un ambiente ideato e realizzato con le opportune peculiarità per l'installazione al suo interno di apparecchiature elettriche e/o elettroniche di controllo e/o potenza. Lo shelter è costruito modificando di un container ISO standard o mediante la pannellatura di una struttura in acciaio autoportante opportunamente dimensionata e personalizzata in funzione dell'utilizzo previsto*

### ■ PERCHE' USARE UNO SHELTER

*Lo shelter risponde pienamente alle esigenze del mercato moderno fornendo ad apparecchiature sensibili un alloggio sicuro, una soluzione compatta facilmente trasportabile, flessibile, personalizzabile e facilmente installabile a destinazione partendo dal concetto dell'unità plug and play*

### ■ PRINCIPALI CARATTERISTICHE COSTRUTTIVE

*Ogni Shelter viene progettato in funzione delle apparecchiature e/o equipaggiamenti installati al suo interno. Progettazione meccanica della struttura portante verificata sia in fase statica (condizione di lavoro) che in fase dinamica, ossia verifiche al sollevamento.*

*Progettazione elettrica degli impianti ausiliari comprende la verifica termodinamica per garantire un corretto isolamento ed ottenere una temperatura costante all'interno, la verifica illuminotecnica al fine di garantire il livello di lux richiesti, il quadro ausiliario di gestione e alimentazione dei sistemi installati.*

*Impianto di rilevamento fuoco/fiamma, impianto di spegnimento CO2 e/o FM200*

*Posizionamento di porte, Infissi e/o griglie d'aerazione in funzione delle specifiche esigenze del client, Pavimento di tipo fisso e/o flottante*

*Telai di rinforzo per il posizionamento e il montaggio delle apparecchiature installate*

*Doppia copertura con camera d'aria per limitare l'effetto irradiante dell'esposizione al sole*

*Verniciatura finale secondo le specifiche condizioni d'utilizzo*

### ■ QU'EST-CE QUE C'EST UN SHELTER

*Un shelter est un abri étudié et réalisé avec les particularités appropriées pour l'installation à l'intérieur d'appareillages électroniques et/ou électriques de contrôle et/ou de puissance. Le shelter est construit en modifiant un container ISO standard ou par le revêtement avec panneaux sandwich d'une structure en acier auto-porteuse convenablement dimensionnée et personnalisée en fonction de l'utilisation prévue .*

### ■ POURQUOI UTILISER UN SHELTER

*Le shelter répond complètement aux exigences du marché moderne il fournit aux équipements électriques et/ou électroniques un abri sûr, une solution compacte, facilement transportable, flexible, personnalisable et d'installation facile à destination suivant le concept plug and play .*

### ■ PRINCIPALES CARACTÉRISTIQUES CONSTRUCTIVES

*Chaque Shelter est étudié en fonction des équipements installés à l'intérieur. L'étude mécanique de la structure portante est vérifiée soit pour la charge statique (condition de travail) que dynamique (opération de levage). L'étude électrique des installations auxiliaires comprend la vérification de la thermodynamique pour garantir un isolement correct et obtenir une température constante à l'intérieur, la vérification de l'éclairage afin de garantir le niveau de lux demandé, le tableau auxiliaire de gestion et alimentation des systèmes installés.*

*Installation système de détection feu / fumée et système d'extinction CO2 et/ou FM200*

*Positionnement des portes, fenêtres, grilles d'aération selon les exigences spécifiques du client, plancher type fixe ou avec dalles flottantes.*

*Châssis de renforcement pour le positionnement et la fixation des équipements installés*

*Double toiture avec chambre d'air pour limiter l'effet irradiant de l'exposition au soleil*

*Peinture finale selon les conditions spécifiques d'installation sur site et la spécification technique du client*

### ■ WHAT'S A SHELTER

*A shelter is an environment engineered and realized with the opportune peculiarities for the installation on his inside of electric power or control equipment's. The shelter are built modifying a standard ISO container or by applying insulated panels to a structure in a welded steel self-supporting type opportunely engineered and personalized according to the final use condition and installation site.*

### ■ WHY TO USE A SHELTER

*The shelter fully responds to the need of the modern market in order to furnishing to the electrical sensitive equipment's a sure lodging place, is a compact, flexible and customized solution in its size and accessories following the concept of plug and play unit. In addition the shelter facilitate and reduce loss of time for transportation, loading e/o unloading operation and installation on filed.*

### ■ MAIN CONSTRUCTIVE CHARACTERISTIC

*Every Shelter is engineering according to the installed equipment's on its inside. Mechanical engineering foresee the mechanical structure stress verification in static (on site job condition) and dynamic (loading e/o unloading operation)*

*Electrical engineering of the auxiliary system includes the thermodynamic verification to guarantee a correct isolation and to get a constant and controlled of the inside temperature, the lighting verification with the purpose to guarantee the level of in demand lux, the auxiliary panel for the power supply and the control of the installed systems.*

*Fire/smoke detection system, fire extinguishers system by CO2 or FM200*

*Positioning of doors, windows e/o aeration and ventilation grilles according to the customer specification,*

*Floor type fixed by undulated aluminum plate or floating floor*

*Welded steel chassis for supporting and fixing of the installed equipment's*

*Doubles roof with air room in order to minimize the effect eating impact of the sun radiation*

*Final painting according to the specific conditions of use and customer specification*

**NR. 4 UNTIS FOR FINAL DESTINATION IRAQ MARKET THROUGH  
A FRENCH ENGINEERING COMPANY**



**Total length: 9 mt - Total wide: 2,5 mt - Total height: 3 mt - Max on load weight: 12.000 Kg**

Shelter self-supporting type for loading electrical switchgear engineered for fire resistance 30 minutes (REI 30) Main structure by main and connection beams with opportune size according to the total weights of the installed equipment's, all the shelter side (roof, bottom under floor, and the 4 side) are protected with special sandwich panel with thickness of 50 mm with inside wool of rock. Equipped with double condition system 2x24.000 Btu, lighting, emergency lighting, fire detection system.

**SOLUZIONI ELETTRICHE INDUSTRIALI**

**NR. 2 UNTIS FOR FINAL DESTINATION FRENCH MARKET THROUGH**  
**ABB FRENCH FOR EDF INSTALLATION**



Total length: 6 mt - Total wide: 2,5 mt - Total height: 3,4 mt - Max on load weight: 8.000 Kg

Shelter self-supporting type for loading electrical switchgear engineered for fire resistance 30 minutes (REI 30) Main structure by main and connection beams with opportune size according to the total weights of the installed equipment's, all the shelter side (roof, bottom under floor, and the 4 side) are protected with special sandwich panel with thickness of 50 mm with wool of rock. Equipped with double condition system 1x12.000 Btu, lighting, emergency lighting.

**SOLUZIONI ELETTRICHE INDUSTRIALI**

**NR. 6 UNTIS FOR FINAL DESTINATION MOROC MARKET THROUGH**  
**AN ITALIAN ENGINEERING COMPANY**



Total length: 12 mt - Total wide: 2,3 mt - Total height: 3 mt

Shelter self-supporting type for loading electrical switchgear, dry type transformer engineered for installation on sea board. Main structure by main beams and connection with opportune size according to the total weights of the installed equipment's, all the shelter side (roof, bottom under floor, and the 4 side) are manufactured with steel undulated flat welded on the main chassis and internally protected with special sandwich panel type with thickness of 50 mm with poliuretanic mousse for thermal insulation. Internally divided in separate rooms for electrical equipment and transformer. Equipped with double condition system 2x24.000 Btu, lighting, emergency lighting, fire detection system.

**NR. 1 UNITI FOR FINAL DESTINATION ALGERIAN MARKET THROUGH**  
**A FRENCH ENGINEERING COMPANY**



Total length: 4,3 mt - Total wide: 2,5 mt - Total height: 3 mt - Max on load weight: 10.000 Kg

Shelter self-supporting type for loading electrical switchgear engineered for fire resistance 30 minutes (REI 30) Main structure by main beams and connection with opportune size according to the total weights of the installed equipment's, all the shelter side (roof, bottom under floor, and the 4 side) are protected with special sandwich panel type with thickness of 50 mm with wool of rock. Equipped with double condition system 2x12.000 Btu, lighting, emergency lighting, fire detection system.

**NR. 1+1 UNTIS FOR FINAL DESTINATION GERMAN MARKET THROUGH  
A FRENCH ENGINEERING COMPANY**



1x Total length: 16 mt - Total wide: 3 mt - Total height: 3,6 mt -  
1x Total length: 9 mt - Total wide: 3,2 mt - Total height: 3,6 mt -

Max on load weight: 22.500 Kg  
Max on load weight: 17.500 Kg

Shelter self-supporting type for loading electrical switchgear engineered for fire resistance 30 minutes (REI 30) Main structure by main and connection beams with oportune size according to the total weights of the installed equipment's, all the shelter side (roof, bottom under floor, and the 4 side) are protected with special sandwich panel type with thickness of 50 mm with wool of rock. Equipped with double condition system, lighting, emergency lighting, fire detection system.



**SOLUZIONI ELETTRICHE INDUSTRIALI**

**NR. 5 UNTIS SUBSTATION FOR FINAL DESTINATION ALGERIAN MARKET THROUGH**  
**A FRENCH ENGINEERING COMPANY**



5 x Total length: 6,5 mt - Total wide: 3 mt - Total height: 3 mt - Max on load weight: 8.500 Kg

Shelter self-supporting type for loading electrical switchgear and distribution transformer engineered for fire resistance 30 minutes. Main structure by main beams and connection with opportune size according to the total weights of the installed equipment's, Equipped with double condition system, lighting, emergency lighting, fire detection system.

**SOLUZIONI ELETTRICHE INDUSTRIALI**

**NR. 1 UNIT FOR FINAL DESTINATION FRENCH CIMENT PLANT THROUGH**  
**A FRENCH ENGINEERING COMPANY**



1 x Total length: 10,5 mt - Total wide: 3 mt - Total height: 3 mt - Max on load weight: 7.500 Kg

Shelter self-supporting type for loading electrical low voltage switchgear engineered for fire resistance 60 minutes. Main structure by main and connection beams with opportune size according to the total weights of the installed equipment's, Equipped with double condition and over pressure system, lighting, emergency lighting.

**SPECIAL SHELTER FOR TMB CONTROL CABINET**



- 1 x Total length: 3,5 mt - Total wide: 2,5 mt - Total height: 2.2 mt - Max on load weight: 2.500 Kg
- 2 x Total length: 2,3 mt - Total wide: 1 mt - Total height: 2.2 mt - Max on load weight: 1.500 Kg
- 2 x Total length: 3,3 mt - Total wide: 1 mt - Total height: 2.2 mt - Max on load weight: 1.500 Kg
- 4 x Total length: 4,3 mt - Total wide: 1,4 mt - Total height: 2.4 mt - Max on load weight: 2.000 Kg
- 3 x Total length: 4,3 mt - Total wide: 1,4 mt - Total height: 2.4 mt - Max on load weight: 2.000 Kg
- 1 x Total length: 5,6 mt - Total wide: 2,4 mt - Total height: 2.4 mt - Max on load weight: 2.700 Kg
- 3 x Total length: 4,6 mt - Total wide: 2,2 mt - Total height: 2.4 mt - Max on load weight: 2.300 Kg

Shelter self-supporting type for loading electrical low voltage automation control pannel engineered according to the available reduced space. Main structure by main and connection beams with opportune size according to the total weights of the installed equipment's, Equipped with condition, lighting, emergency lighting.



**SHELTER PREFABBRICATI EQUIPAGGIATI**  
**SHELTER PREFABRIQUE ET EQUIPEE**  
**PREFABRICATED AND EQUIPPED SHELTER**

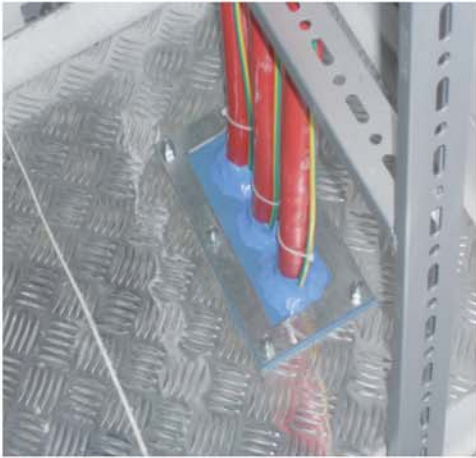
**SOLUZIONI ELETTRICHE INDUSTRIALI**

***OTHER REALISSATION FOR DIFFERENT FIELD***



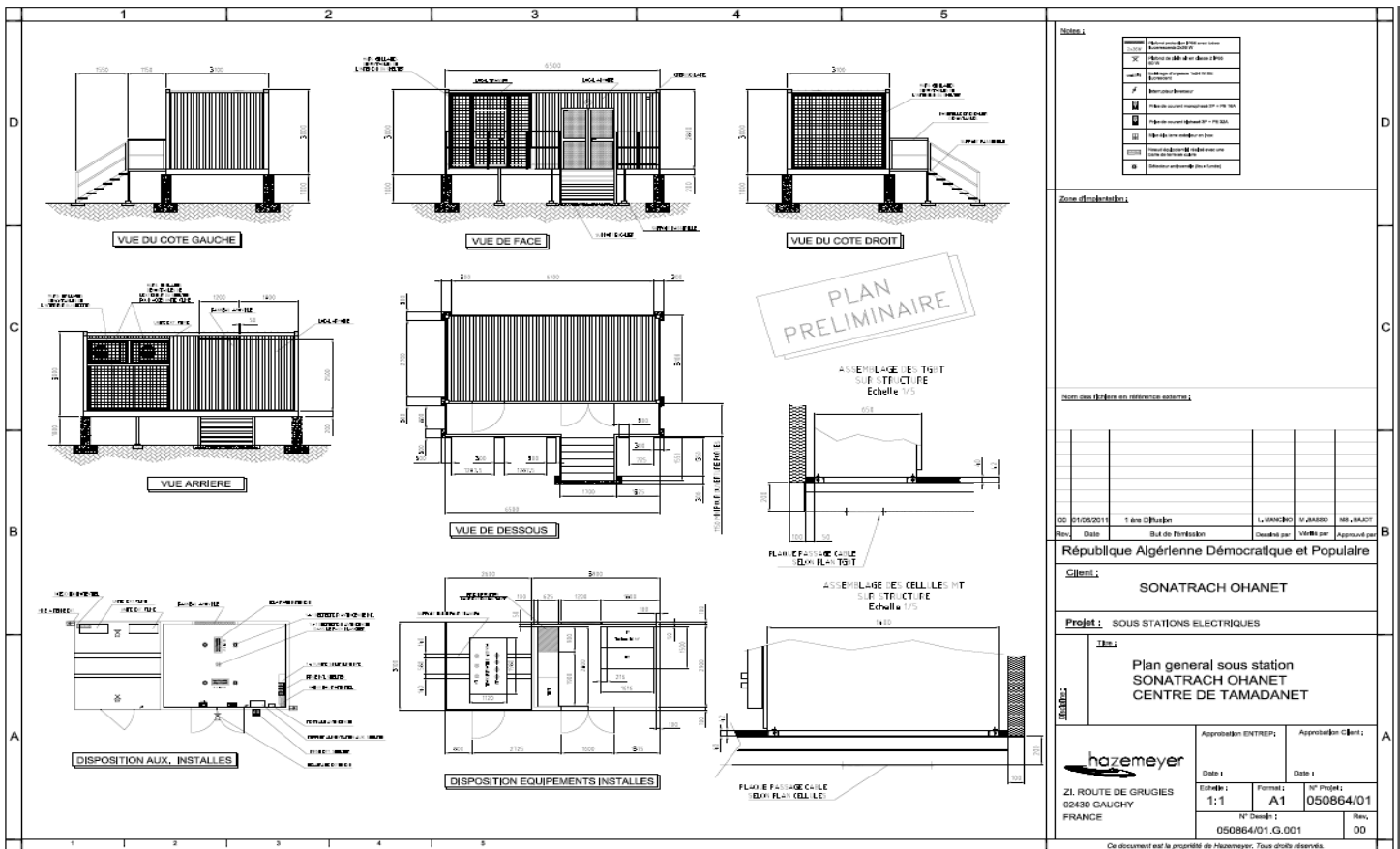
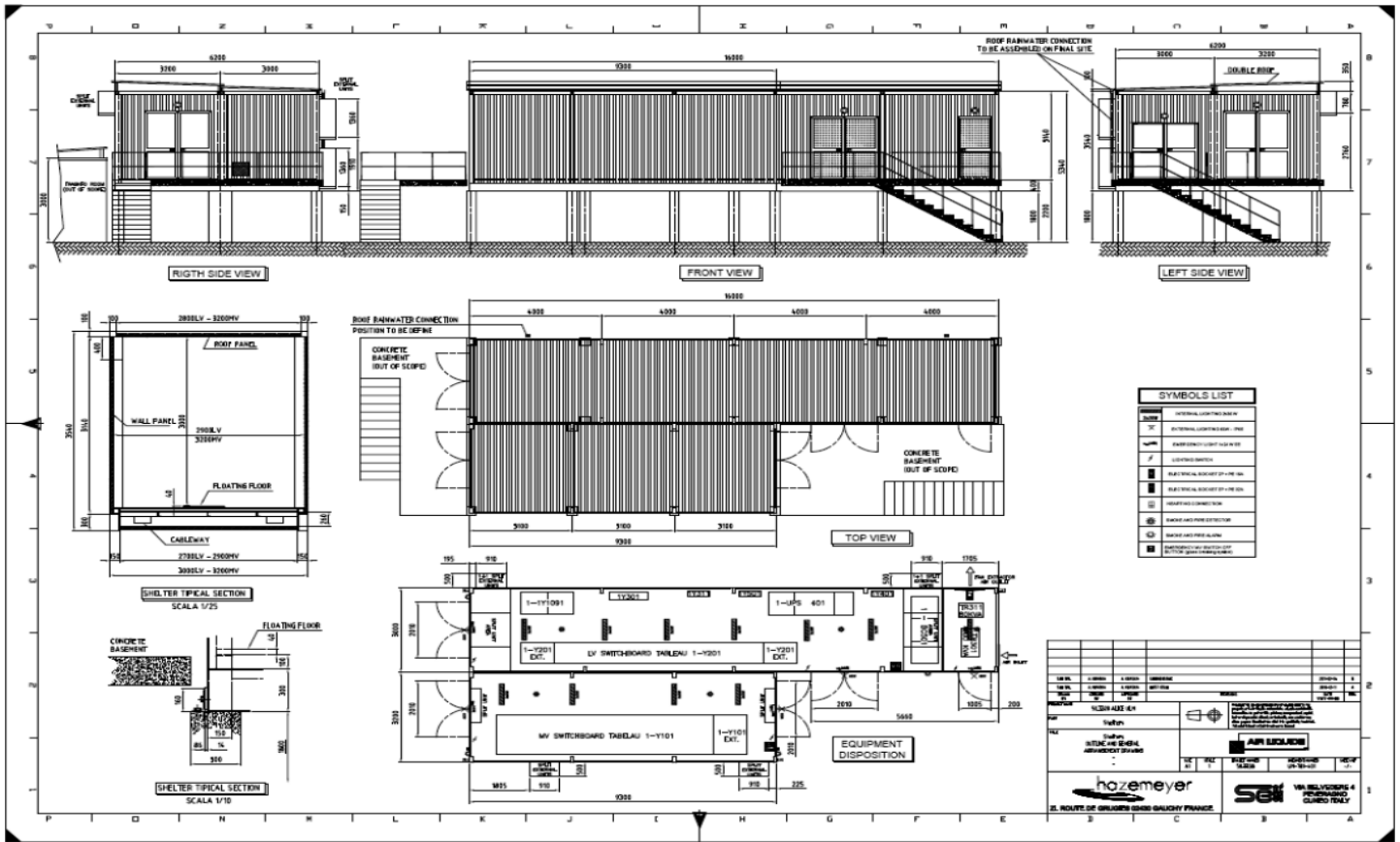
SOLUZIONI ELETTRICHE INDUSTRIALI

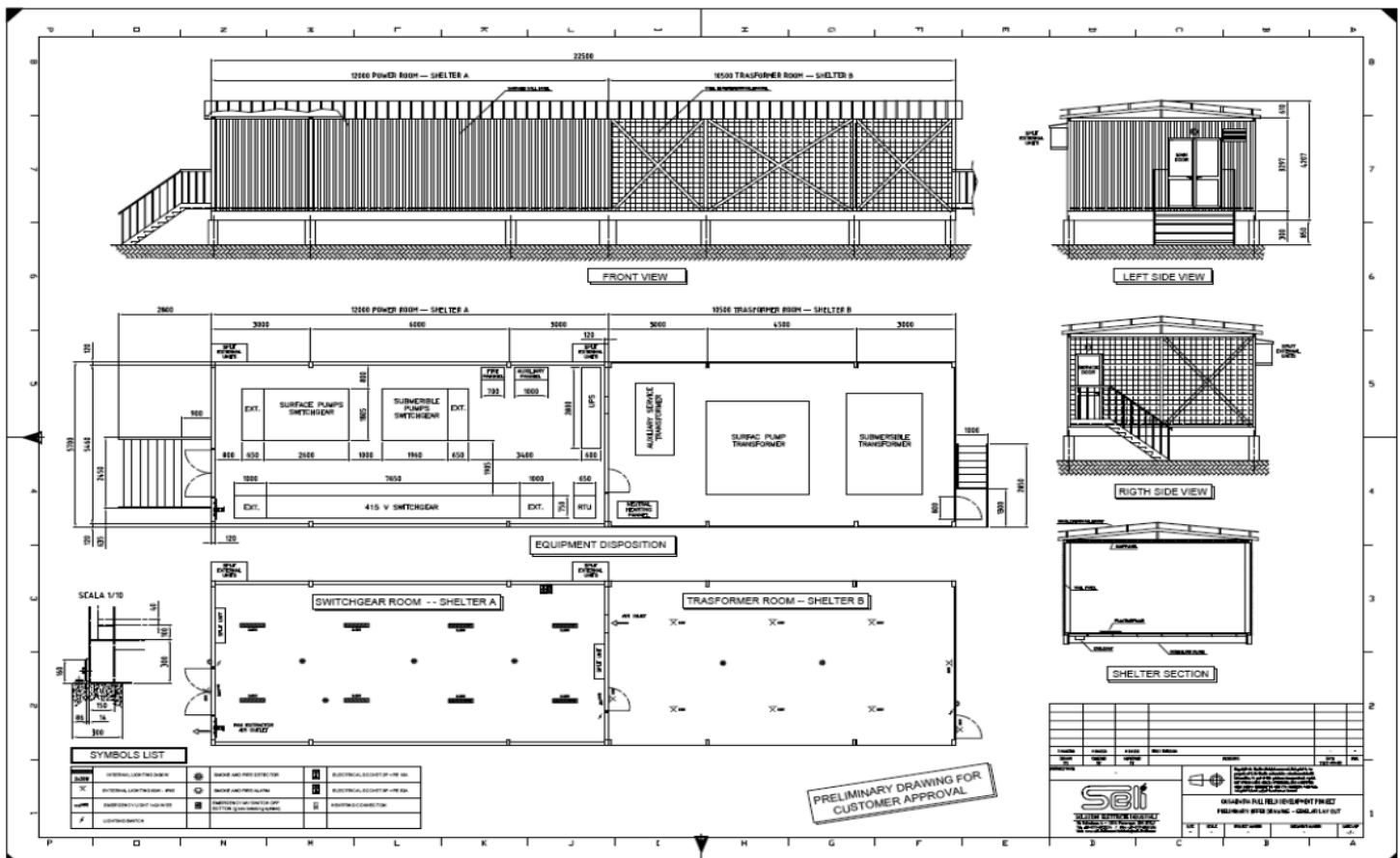
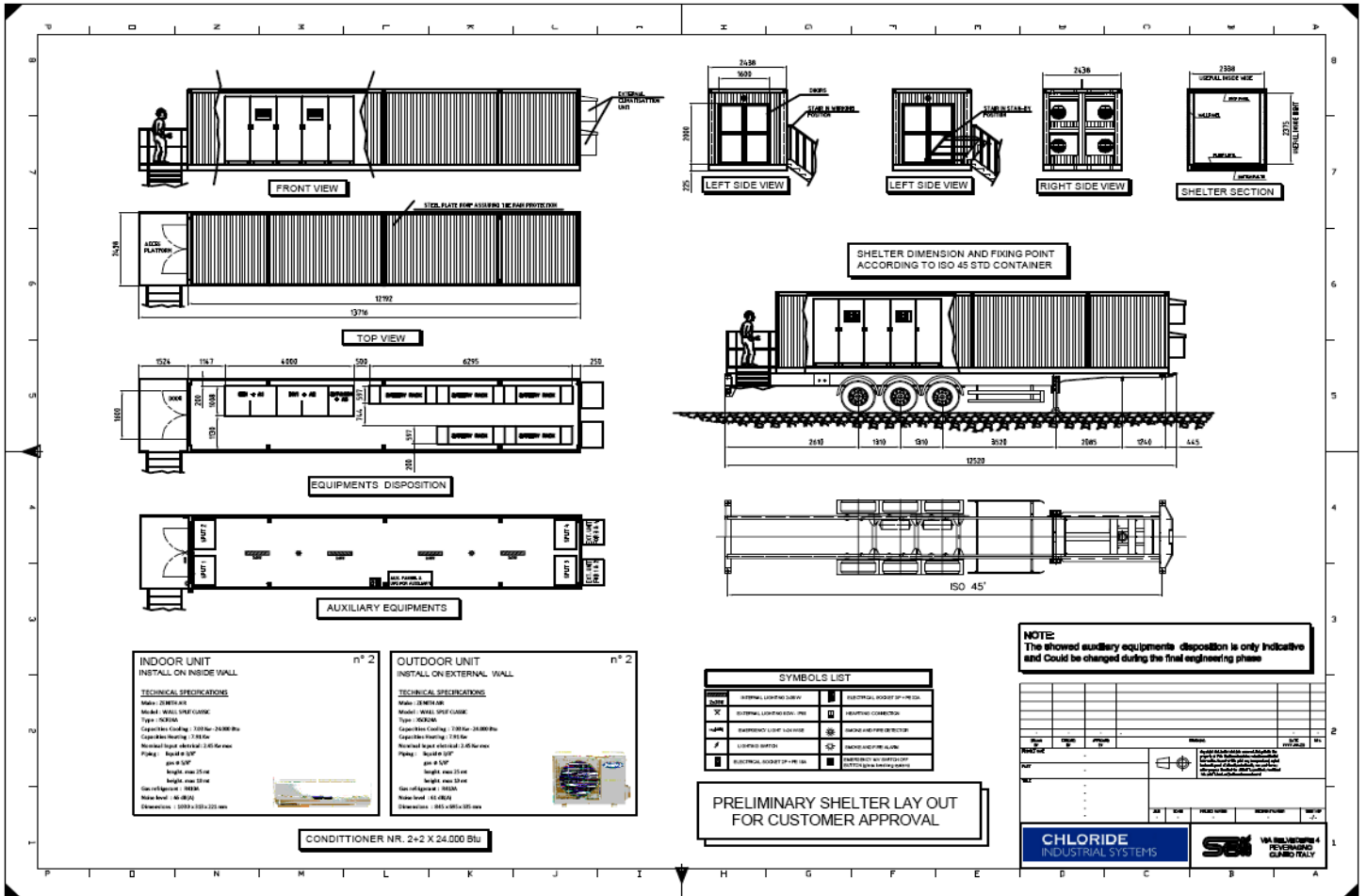
SOME DETAILS OF THE INSTALLATIONS




SOLUZIONI ELETTRICHE INDUSTRIALI

SOME DETAILS OF THE INSTALLATIONS






## SOLUZIONI ELETTRICHE INDUSTRIALI


 Le informazioni contenute in questo manuale sono di proprietà della SELI Srl. È vietata la riproduzione anche parziale, senza preventiva autorizzazione scritta dalla SELI Srl.

La SELI Srl si riserva il diritto di modificare, senza preavviso, le caratteristiche del prodotto presentato in questo manuale.

**SELI Srl**

 *SELI Srl reserves the right to modify this catalogue without prior notice. The information included in this catalogue is property of SELI Srl company. Reproduction or publication of part or whole of this catalogue without prior authorisation is forbidden.*

**SELI Srl**

 *Les données incluses dans ce dépliant sont propriété de la Société SELI Srl. La reproduction même partielle du dépliant est interdite sans autorisation de la Société SELI Srl. Les produits et matériaux présentés sont à tout moment susceptibles de modifications.*

**SELI Srl**

### SELI SRL

Fraz. San Lorenzo, Via Rassano Sottano 5/A  
12016 Peveragno (CN)

Tel.: +39 0171 383214 – Fax: +39 0171 385104

P.IVA / C.F. : 03256430046

Email: [info@seli-italia.com](mailto:info@seli-italia.com)

Web site: [www.seli-italia.com](http://www.seli-italia.com)



# Competence & Experience